

94/776

UNITED NATIONS  NATIONS UNIES

(XI.B.16)

POSTAL ADDRESS—ADRESSE POSTALE: UNITED NATIONS, N.Y. 10017
CABLE ADDRESS—ADRESSE TELEGRAPHIQUE: UNATIONS NEWYORK

REFERENCE: C.N.344.1994.TREATIES-46 (Depositary Notification)

AGREEMENT CONCERNING THE ADOPTION OF UNIFORM CONDITIONS
OF APPROVAL AND RECIPROCAL RECOGNITION OF APPROVAL
FOR MOTOR VEHICLE EQUIPMENT AND PARTS
DONE AT GENEVA ON 20 MARCH 1958

AMENDMENTS PROPOSED BY THE NETHERLANDS
TO REGULATION NO. 37
ANNEXED TO THE AGREEMENT

The Secretary-General of the United Nations, acting in his capacity as depositary, communicates the following:

On 22 November 1994, the Government of the Netherlands proposed, in accordance with article 12, paragraph 1, of the above-mentioned Agreement, several amendments to Regulation No. 37: ("Uniform provisions concerning the approval of filament lamps for use in approved lamp units of power-driven vehicles and of their trailers") annexed to the Agreement.

A copy, in the English and French languages, of the document containing the text of the proposed amendments is transmitted herewith (Supplement 11 to the 03 series of amendments to Regulation No. 37 in its original form: doc. TRANS/WP.29/412).

In this connection, the Secretary-General wishes to draw attention to paragraph 1 of said article 12 of the Agreement, which reads as follows:

"Any Contracting Party applying a Regulation may propose one or more amendments to it. The text of any proposed amendment to a Regulation shall be transmitted to the Secretary-General of the United Nations, who shall transmit it to the other Contracting Parties. The amendment shall be deemed to have been accepted unless within a period of three months following this notification a Contracting Party applying the Regulation has expressed an objection, in which case the amendment shall be deemed to have been rejected. If the amendment is deemed to have been accepted, it shall enter into force at the end of a further period of two months."

16 January 1995

55

Attention: Treaty Services of Ministries of Foreign Affairs and of international organizations concerned

*ENGLISH AND SPANISH (WITH ANNEX:

AUSTRIA	NORWAY
BOSNIA AND HERZEGOVINA	POLAND
CROATIA	PORTUGAL
CZECH REPUBLIC	RUSSIAN FEDERATION
DENMARK	SLOVAKIA
FINLAND	SLOVENIA
GERMANY	SPAIN
GREECE	SWEDEN
HUNGARY	UNITED KINGDOM
NETHERLANDS	YUGOSLAVIA

SENT TO THE FOLLOWING SECRETARIAT SERVICES (E/F):

- * ECE
- * THE CHIEF, DISTRIBUTION SECTION, PUBLISHING DIVISION, DCS, ROOM NL-316
(65 COPIES: E/F, FOR DISTR. TO THE INFORMATION CENTRES)
- * BUREAU DE LIAISON JURIDIQUE, PALAIS DES NATIONS, GENEVA, SWITZERLAND
- * THE LAW LIBRARIAN, UNCITRAL LAW LIBRARY, VIENNA INTERNATIONAL CENTRE,
P.O. BOX 500, A-1400, VIENNA, AUSTRIA
- * MONSIEUR LE GREFFIER DE LA COUR INTERNATIONALE DE JUSTICE, PALAIS DE LA PAIX,
2517 KJ LA HAYE, PAYS-BAS/NETHERLANDS
- * THE DIRECTOR, TRANSPORT DIVISION, ECONOMIC COMMISSION FOR EUROPE, PALAIS
DES NATIONS, 1211 GENEVA 10, SWITZERLAND
- * THE LEGAL COUNSEL, OFFICE OF LEGAL AFFAIRS, ROOM 3427-C
- * THE CHIEF, TREATY SECTION, OFFICE OF LEGAL AFFAIRS, ROOM S-3464-A
- * PROF. DAVID L. HARRIS, LL.M., PH.D., EDITOR, INDEX OF MULTILATERAL TREATIES,
UNIVERSITY OF NOTTINGHAM, TREATY CENTRE, UNIVERSITY PARK, NOTTINGHAM NG7 2RD,
UNITED KINGDOM (E)
- * PROF. IGOR I. KAVASS, LEGAL INFORMATION CENTER, SCHOOL OF LAW, VANDERBILT
UNIVERSITY, NASHVILLE, TENNESSEE 37240 (E)
- * INTERNATIONAL MOTORCYCLE MANUFACTURERS ASSOCIATION, 4, PROMENADE DU BARRAGE,
F-94260 FRESNES, FRANCE
- * BUREAU PERMANENT INTERNATIONAL DES CONSTRUCTEURS D'AUTOMOBILES, 4, RUE DE BERRI,
F-75008 PARIS, FRANCE
- * MARILOU M. RIGHINI, INTERNATIONAL LEGAL MATERIALS, AMERICAN SOCIETY OF
INTERNATIONAL LAW, 2223 MASSACHUSETTS AVENUE, N.W., WASHINGTON, D.C. 20008-2864
(E)



**Economic and Social
Council**

Distr.

RESTRICTED

TRANS/WP.29/412

12 August 1994

ENGLISH

Original: ENGLISH
and FRENCH

ECONOMIC COMMISSION FOR EUROPE

INLAND TRANSPORT COMMITTEE

Working Party on the Construction of Vehicles

DRAFT SUPPLEMENT 11 TO THE 03 SERIES OF AMENDMENTS
TO REGULATION No. 37
(Filament lamps)

Note: The text reproduced below has been adopted by the Working Party on the Construction of Vehicles at its one-hundred-and-third session (TRANS/WP.29/408, para. 63). It is based on document TRANS/WP.29/R.660, not amended.

The distribution of documents of the Inland Transport Committee and its subsidiary bodies is limited. They are distributed only to governments, to specialized agencies and to governmental and non-governmental organizations which take part in the work of the Committee and of its subsidiary bodies, and should not be given to newspapers or periodicals.

List of Contents, annexes, annex 1,

Sheets HS1, delete the words "(halogen filament lamp for motor cycles)."

Add at the end of the list new sheets, to read: */

"....
Sheets H27W
Sheets P27W
Sheets P27W/7W
Sheet WY5W
Sheets H21W
Sheets W21W
Sheets W21/5W"

Paragraph 2.4.3.1. footnote 4/, amend to read:

"4/ 1 for, 8 for the Czech Republic, ... 23 for Greece, 24 (vacant),
25 for Croatia, 26 for Slovenia and 27 for Slovakia. Subsequent
numbers"

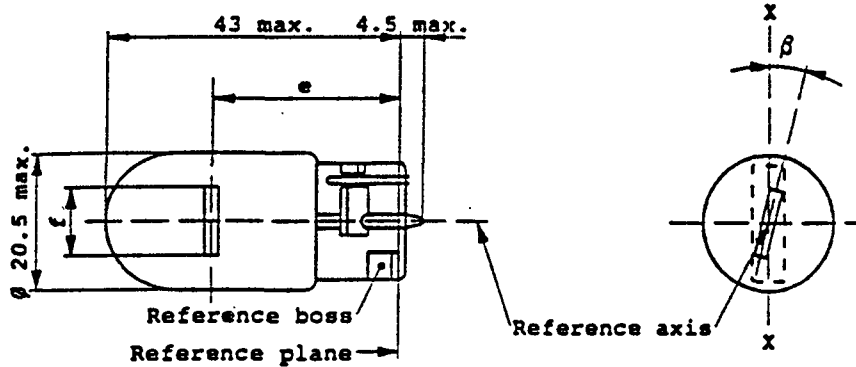
Annex 1, Sheets HS1/1, HS1/2, HS1/3, HS1/4, HS1/5, in the titles delete the
words "HALOGEN MOTOR CYCLE FILAMENT LAMP" (five times) and further, at the
bottom of Sheet HS1/1, delete the words "TO BE USED ON MOTOR CYCLES ONLY."

*/ The first five filament lamp categories were added by Supplement 10 to the
03 series of amendments to Regulation No. 37 (TRANS/SC.1/WP.29/R.652).

Annex 1, add at the end new Sheets W21W/1, W21W/2 and W21/5W/1 to W21/5W/3, to read as follows:

CATEGORY W21W

Sheet W21W/1



DIMENSIONS in mm	Filament lamps of normal production			Standard filament lamp
	min.	nom.	max.	
e		29.0 2/		29.0 ± 0.3
f			7.5	7.5 + 0 - 2
Lateral deviation 1/			2/	0.3 max
β	-15° 2/	0°	+15° 2/	0° ± 5°
Cap W 3x16d in accordance with IEC Publ. 61 (sheet 7004-105-1)				
ELECTRICAL AND PHOTOMETRIC CHARACTERISTICS				
Rated values	Volts	12		12
	Watts	21		21
Test voltage	Volts	13.5		
Objective values	Watts	25		25 at 13.5 V
	±%	6		6
	Luminous flux lm	460		
	±%	15		
Reference luminous flux : 460 lm at approx. 13.5 V				

1/ Maximum lateral deviation of filament centre from two mutually perpendicular planes both containing the reference axis and one containing the axis X-X.

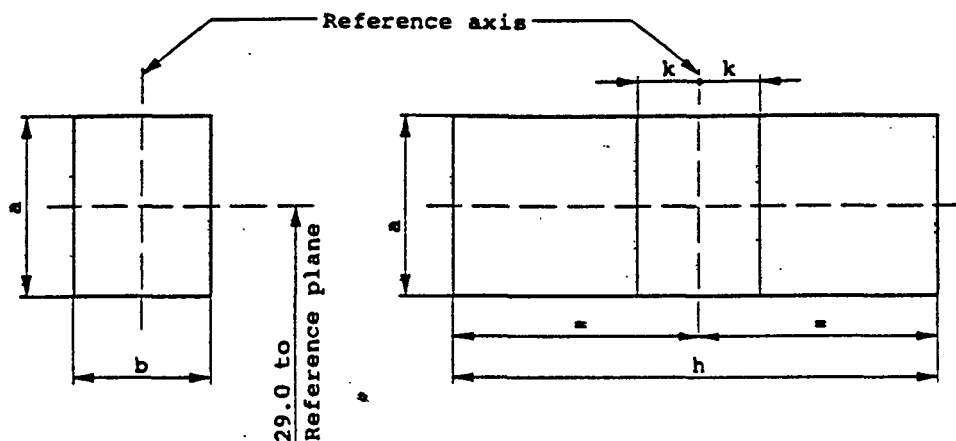
2/ To be checked by means of a box system, sheet W21W/2.

Screen projection requirements

This test is used to determine, by checking whether the filament is correctly positioned relative to the reference axis and the reference plane and has an axis perpendicular, within $\pm 15^\circ$, to the plane through the axis X-X and the reference axis, whether a filament lamp complies with the requirements.

Side elevation

Front elevation

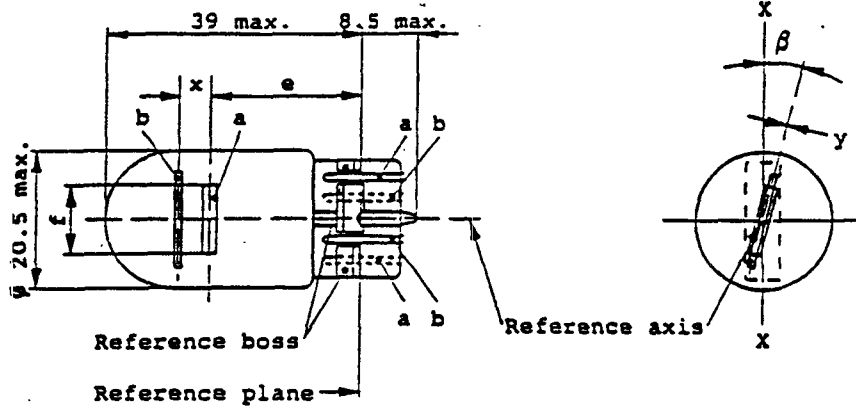


Reference	a	b	h	k
Dimension	3.5	3.0	9.5	1.0

Test procedure and requirements.

1. The filament lamp is placed in a holder capable of being rotated about its axis and having either a calibrated scale or fixed stops corresponding to the angular displacement tolerance limits, i.e. $\pm 15^\circ$. The holder is then so rotated that an end view of the filament is seen on the screen on to which the image of the filament is projected. The end view of the filament shall be obtained within the angular displacements tolerance limits ($\pm 15^\circ$).
2. Side elevation
The filament lamp placed with the cap down, the reference axis vertical and the filament seen end-on, the projection of the filament shall lie entirely within a rectangle of height "a" and width "b", having its centre at the theoretical position of the centre of the filament.
3. Front elevation
The filament lamp placed with the cap down and the reference axis vertical, the filament lamp being viewed in a direction at right angles to the filament axis:
 - 3.1 The projection of the filament shall lie entirely within a rectangle of height "a" and width "h", having its centre at the theoretical position of the centre of the filament.
 - 3.2 The centre of the filament shall not be offset by more than distance "k" from the reference axis.

a=major (high-wattage) filament
b=minor (low-wattage) filament



DIMENSIONS in mm	Filament lamps of normal production			Standard filament lamp		
	min.	nom.	max.			
e		25.0 1/		25.0 ± 0.3		
f			7.5	7.5 ⁺⁰ / ₋₂		
Lateral deviation	2/		1/	0.3 max		
x	3/	2.8 1/		2.8 ± 0.3		
y	3/	0.0 1/		0.0 ± 0.3		
β		- 15° 1/	0°	15° 1/	0° ± 5°	
Cap W 3x16q in accordance with IEC Publ. 61 (sheet 7004-106-1)						
ELECTRICAL AND PHOTOMETRIC CHARACTERISTICS						
Rated values	V	12			12	
	W	21	5		21	5
Test voltage	V	13.5				
Objective values	Watts	W	25	6	25 6 at 13.5 V	
		±t	6	10	6	10
	Luminous flux	lm	440	35		
		±t	15	20		
Reference luminous flux : 440 and 35 lm at approx. 13.5 V						

- 1/ To be checked by means of a box system, sheets W21/SW/2 & 3.
- 2/ Maximum lateral deviation of major filament centre from two mutually perpendicular planes both containing the reference axis and one containing axis X-X.
- 3/ "x" and "y" denote the offset of the axis of the minor filament with respect to the axis of the major filament

Screen projection requirements

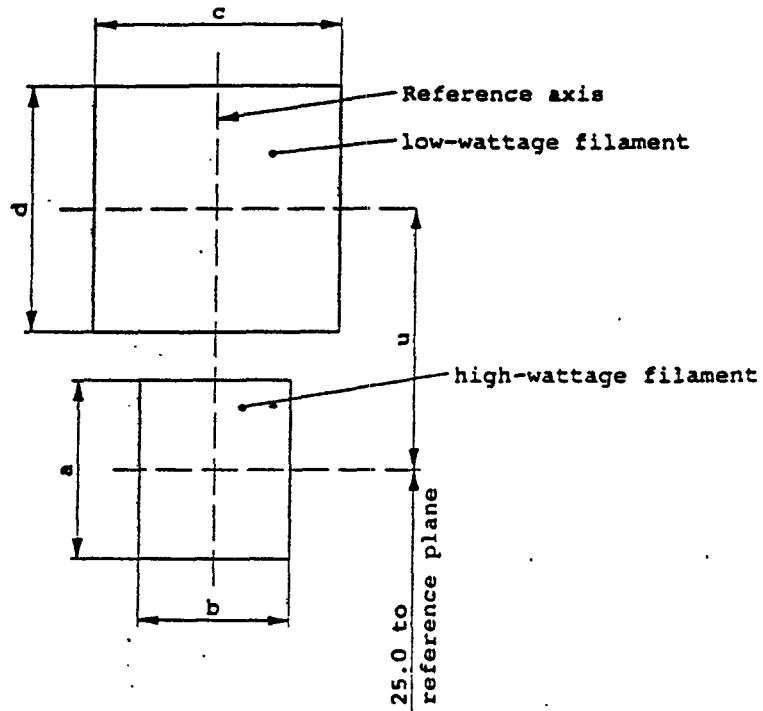
This test is used to determine, by checking whether:

- (a) the major filament is correctly positioned relative to the reference axis and reference plane and has an axis perpendicular, within $\pm 15^\circ$, to the plane through the axis X-X and the reference axis; and whether:
- (b) the minor filament is correctly positioned relative to the major filament, whether a filament lamp complies with the requirements.

Test procedure and requirements.

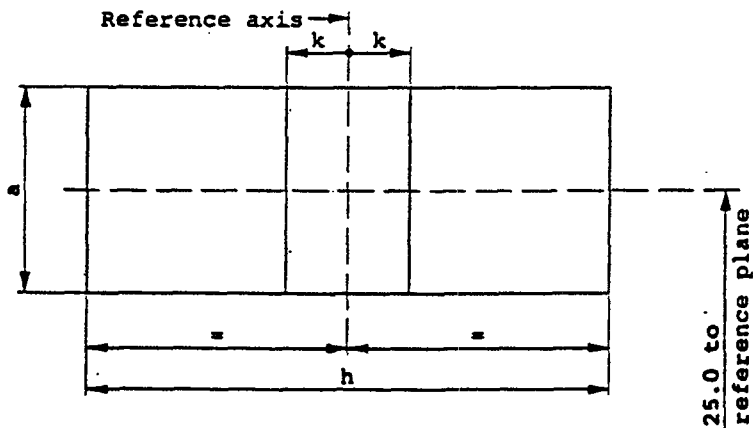
1. The filament lamp is placed in a holder capable of being rotated about its axis and having either a calibrated scale or fixed stops corresponding to the angular displacement tolerance limits. The holder is then so rotated that an end view of the major filament is seen on the screen on to which the image of the filament is projected. The end view of that filament shall be obtained within the angular displacement tolerance limits. ($\pm 15^\circ$).
2. Side elevation
The filament lamp placed with the cap down, the reference axis vertical, and the major filament seen end-on:
 - 2.1 the projection of the major filament shall lie entirely within a rectangle of height "a" and width "b", having its centre at the theoretical position of the centre of the filament;
 - 2.2 the projection of the minor filament shall lie entirely within a rectangle of width "c" and height "d" having its centre at a distance "u" above the theoretical position of the centre of the major filament.
3. Front elevation
The filament lamp placed with the cap down and the reference axis vertical, the filament lamp being viewed in a direction at right angles to the axis of the major filament:
 - 3.1 the projection of the major filament shall lie entirely within a rectangle of height "a" and width "h", centred on the theoretical position of the centre of the filament;
 - 3.2 the centre of the major filament shall not be offset by more than distance "x" from the reference axis;
 - 3.3 the centre of the minor filament shall not be offset from the reference axis by more than $\pm 2\text{mm}$ ($\pm 0.4\text{ mm}$ for standard lamps).

Side elevation



Reference	a	b	c	d	u
Dimensions	3.5	3.0	4.8		2.8

Front elevation



Reference	a	h	k
Dimensions	3.5	9.5	1.0